

**BUKRE CREEK HIGHWAY 50 CROSSING AND REALIGNMENT PROJECT – PHASE 1  
STATELINE, NEVADA**

Nevada Tahoe Conservation District  
400 Dorla Ct., PO Box 915  
Zephyr Cove, Nevada 89448  
(775) 586-1610

The following modifications are hereby made to the Bidding and Contract documents for the above referenced project:

**CHANGES TO THE BID DOCUMENTS**

**ITEM 1:** The bid period shall be extended by 2 calendar days. The first sentence on Page N-1 shall be modified to:

*Sealed proposals will be received in the office of the Nevada Tahoe Conservation District at 400 Dorla Court, Zephyr Cove, Nevada, until 4:00 P.M. on June 30, 2016 for the “Burke Creek Hwy 50 Crossing and Realignment Project – Phase 1, Stateline, Douglas County, Nevada.”*

**ITEM 2:** Bid Item No. 27, Proposed Creek Channel, in the Bid Schedule units shall be modified from LS to LF:

<b>27</b>	<b>Proposed Creek Channel</b>	<b>LF</b>	<b>\$ _____</b>	<b>272</b>	<b>\$ _____</b>
-----------	-------------------------------	-----------	-----------------	------------	-----------------

**ITEM 3:** On the Project Plans, Sheet R-1, shall be changed per the attached sheet to include a detail of the permanent interpretive sign post included in Bid Item No. 26, Highway Buffer Improvements, and note about irrigation water supply.

**ITEM 4:** On the Project Plans, Sheet D-6, Detail 1/D-6, shall be changed to reflect changes in pipe sleeve/casing requirements per attached sheet. Pipe casing references, notes, and call outs on sheet C-7 shall be modified to fifteen (15) feet.

**ITEM 5:** The following sentence shall be added to Section 210.02 of the Special Technical Provisions and added as note 9 and 10 on sheet C-7:

- 9. CMAP joints shall not be placed within ten (10) feet horizontally of the waterline.*
- 10. All waterline pipe joints and fittings within the project area shall be restrained.*

**ITEM 6:** The following paragraphs shall be added to Section 165.02 of the Special Technical Provisions and Section 4.0 of the Preliminary Dewatering and Diversion Plan:

*The Contractor shall contact NDEP Bureau of Water Pollution Control at (775) 687-9418 to determine if coverage under NDEP General Permit NGV201000 will be required for construction dewatering discharges. If required, this permit would be in addition to the SWPPP and Temporary Authorization to Discharge permits.*

**ITEM 7:** The following sentence and paragraph shall be added to Section 190.02 of the Special Technical Provisions:

*All water system material shall be NSF listed as compatible with drinking water.*

**ADDENDUM NO. 1, Page 2 of 2**

*All mechanical joint restraints shall be field-installed mechanical joint restraints, wedge type, working pressure equal to pipe for PVC pipe, EBAA iron, Series 2000PV, Romac Grip Ring or approved equal. Set pin type joint restraint is not acceptable.*

**ITEM 8:** NDEP shall be added to the list of as-built recipients in general note 2 on sheet ii.

**ITEM 9:** Sheet TC-1, attached to this addendum, shall be incorporated into the project plan set as the base traffic control plan and the minimum required by NDOT.

**CLARIFICATION ITEMS**

**CLARIFICATION ITEM 1:** A signed copy of Addendum 1 shall be attached to and submitted with the bid proposal.

**CLARIFICATION ITEM 2:** Proposed combination drop inlet is a modified type 4R drop inlet or equal.

**CLARIFICATION ITEM 3:** See sheet G-2 for utility contact information. Additional contact information for utilities is listed below:

Southwest Gas Steven Young PO Box 1190 24A-580 Carson City, NV 89702-1190 p. 775-887-2872 Steven.young@swgas.com	Frontier Communications John Poole 1520 Church St Gardnerville, NV. 89410 p.775-782-0966 JOHN.G.POOLE@FTR.COM
KGID Cameron McKay P.O. Box 3002 255 Kingsbury Grade, Suite A Stateline, NV 89449 p. 775-588-3548 cam@kgid.org	DCSID Rob Hopkins P.O. Box 578 Zephyr Cove, NV 89448 p.775-588-3558 c.775-781-8769 rhopkins@dcsid.com
NV Energy Jim Cain P.O. Box 10100 Reno, NV 89520 p.775-834-7876 c. 775-843-1950 jcain@nvenergy.com	

**ATTACHMENTS**

Revised Sheet R-1; Revised Sheet D-6; Traffic Control Plan Sheet TC-1

**END OF ADDENDUM**

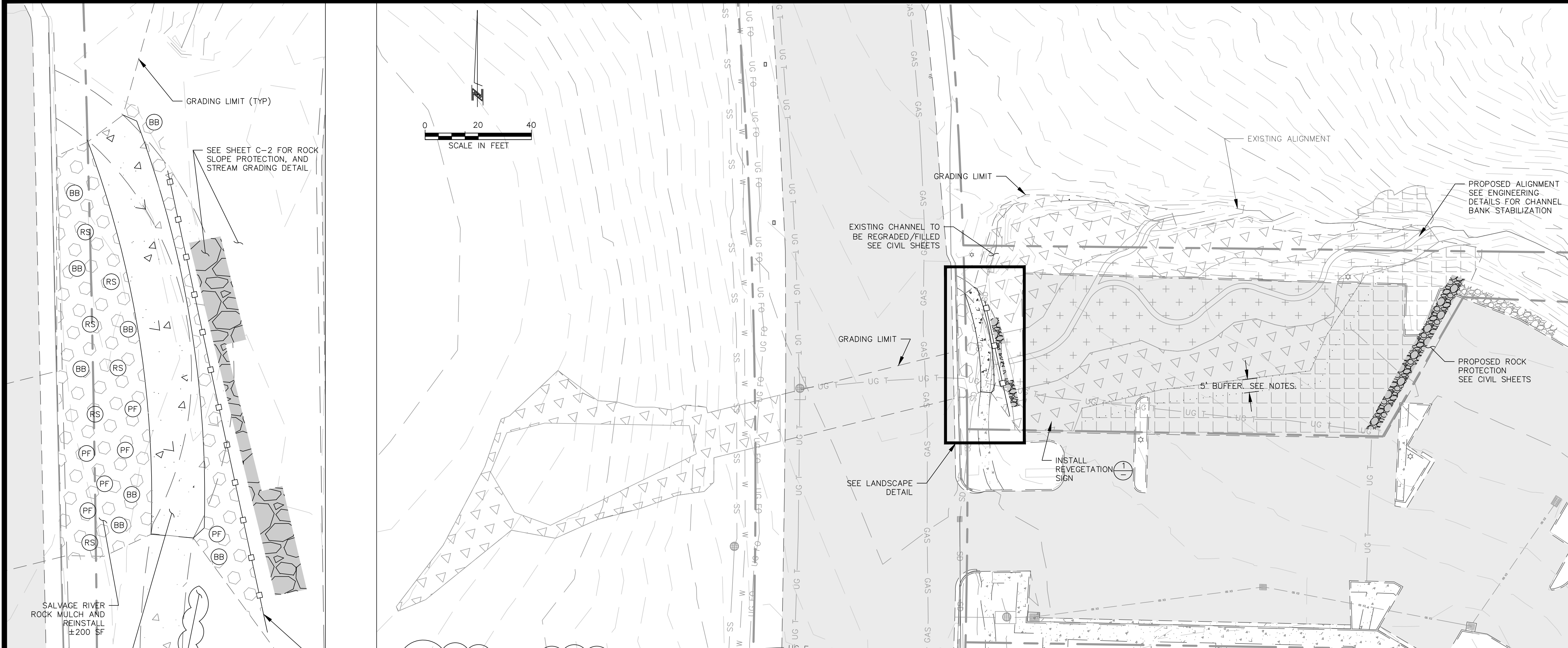
Name of Firm: \_\_\_\_\_ Date: \_\_\_\_\_

By: \_\_\_\_\_

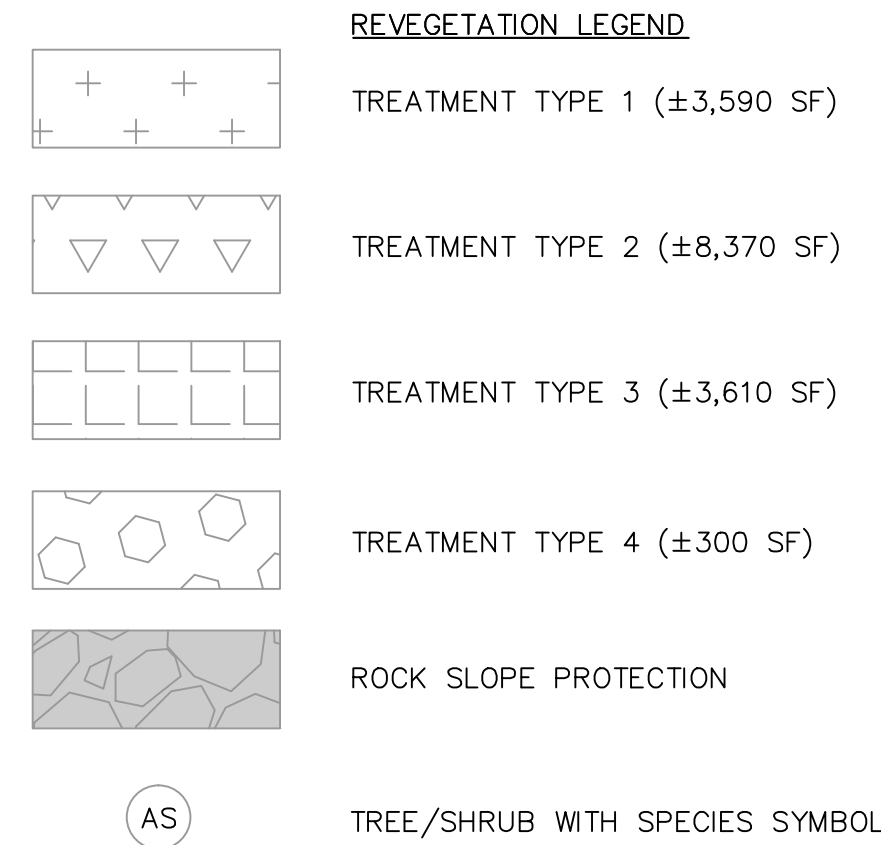


REVISIONS		
NO.	DATE	DESCRIPTION
1	6/23/16	ADDENDUM 1

DESIGNED/DRAWN	MCP/MBG
CHECKED	MCK
DATE	06/23/2016
SCALE	AS SHOWN
PROJECT	BCC



REVEGETATION PLAN  
SCALE 1"=20'



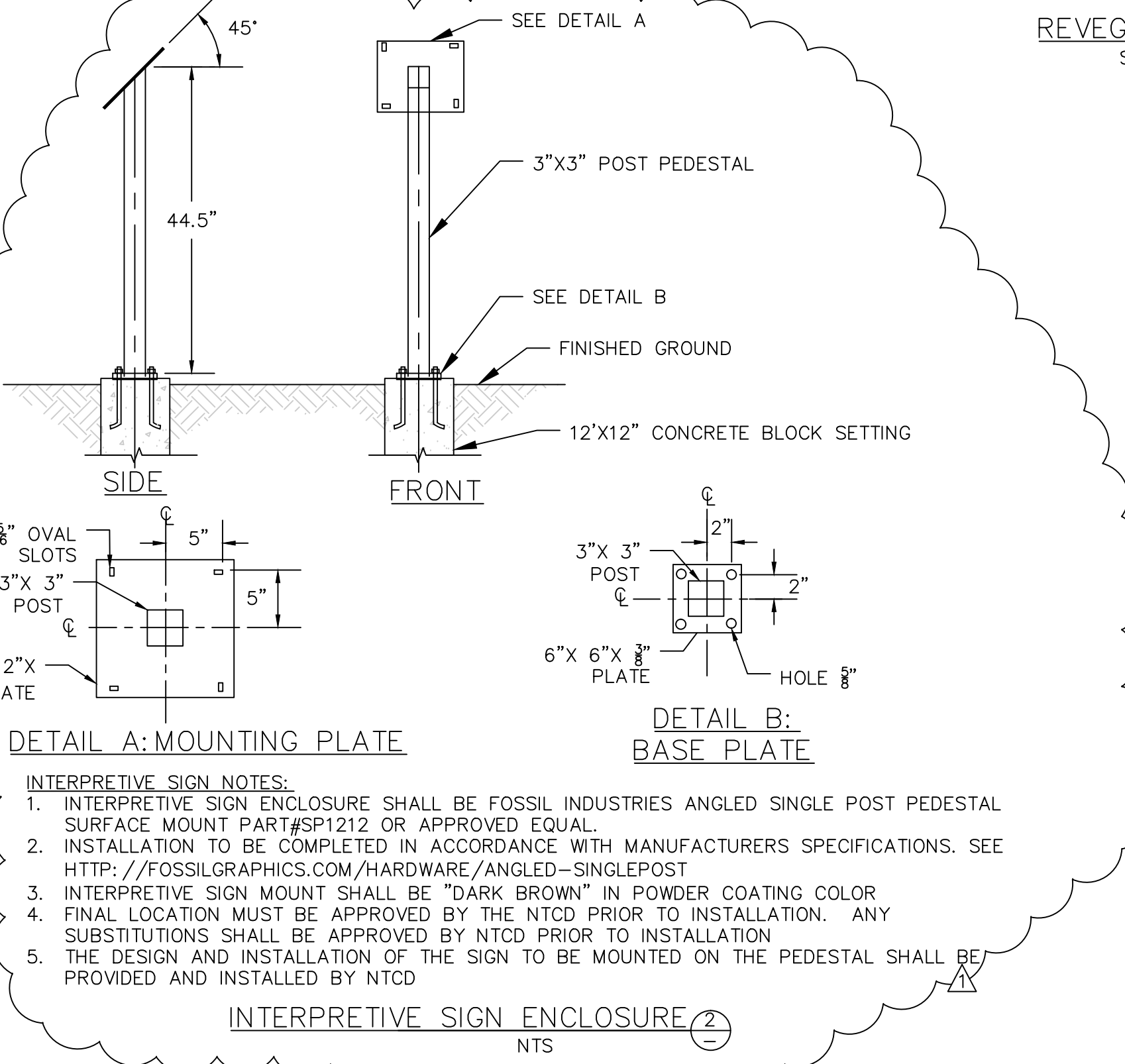
**PLANT LEGEND**

SYMBOL	BOTANICAL NAME	COMMON NAME	QTY.	SIZE
AS	<i>Populus tremuloides</i>	Aspen	12	5-gal
SB	<i>Amelanchier alnifolia</i>	Serviceberry	8	T-pot
SW	<i>Salix scouleriana</i>	Scouler's Willow	4	D-pot
SH	<i>Salix lucida ssp. lasiandra</i>	Shining Willow	4	D-pot
LW	<i>Salix lemmonii</i>	Lemmon's Willow	4	D-pot
DW	<i>Cornus sericea</i>	Red-Osier Dogwood	8	D-pot
EB	<i>Sambucus nigra (mexicana)</i>	Blue Elderberry	5	1-gal
MS	<i>Spirea densiflora</i>	Mountain Spirea	10	1-gal
SC	<i>Ribes nevadense</i>	Sierra Currant	10	1-gal
TW	<i>Lonicera involucrata</i>	Twinberry	6	1-gal
WC	<i>Ribes cereum</i>	Wax Currant	5	1-gal
WR	<i>Rosa woodsii</i>	Woods' Rose	10	1-gal
WB	<i>Betula occidentalis</i>	Water Birch	6	Supercell
MA	<i>Sorbus californica</i>	Mountain Ash	6	Supercell
RS	<i>Perovskia atriplicifolia</i>	Russian Sage	8	1-gal
PF	<i>Potentilla fruticosa</i>	Shrubby Cinquefoil	7	1-gal
BB	<i>Arctostaphylos uva-ursi</i>	Bearberry	11	1-gal

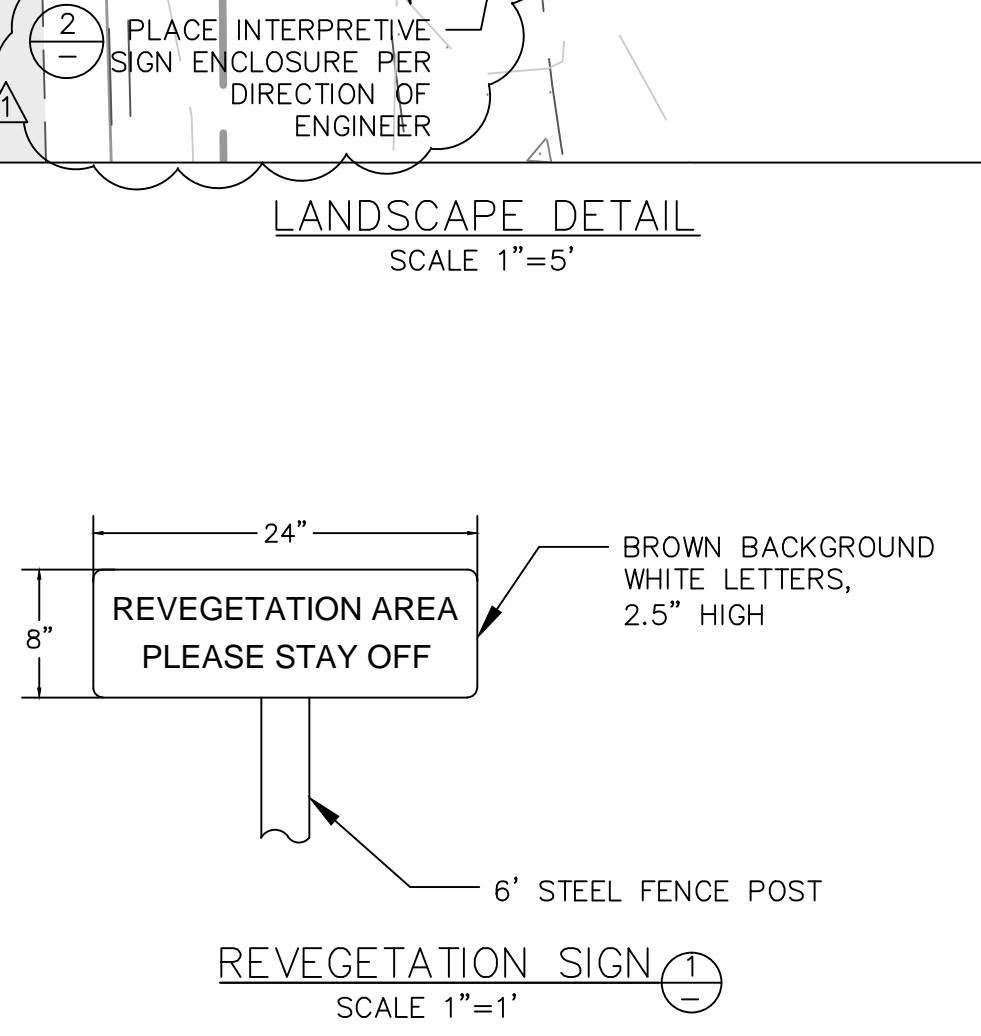
  

BOTANICAL NAME	COMMON NAME	QTY.	SIZE
<i>Gaillardia pulchella</i>	Indian Blanketflower	20	Supercell
<i>Arnica nevadensis</i>	Sierra Arnica	20	Supercell
<i>Delphinium glaucum</i>	Towering Larkspur	20	Supercell
<i>Potentilla gracilis</i>	Slender Cinquefoil	20	Supercell
<i>Mimulus guttatus</i>	Common Monkeyflower	20	Supercell
<i>Castilleja miniata ssp. Miniata</i>	Giant Red Paintbrush	20	Supercell
<i>Castilleja parviflora</i>	Small-Flowered Paintbrush	20	Supercell
<i>Arnica longifolia</i>	Seep-Spring Arnica	20	Supercell
<i>Arnica mollis</i>	Soft Arnica	20	Supercell
<i>Rubus parviflorus</i>	Thimbleberry	30	4"
<i>Aquilegia formosa</i>	Columbine	20	4"
<i>Lupinus polyphyllus</i>	Big Leaved Lupine	20	4"
<i>Lilium parvum</i>	Alpine Lily	10	4"
<i>Potentilla glandulosa</i>	Sticky Cinquefoil	20	4"
<i>Mimulus lewisii</i>	Lewis' Monkeyflower	20	4"
<i>Helenium bigelovii</i>	Bigelow Sneezeweed	20	4"
<i>Penstemon rydbergii var. oreocharis</i>	Meadow Penstemon	20	4"

- NOTES:**
- FINAL PLANT AND PERENNIAL LOCATIONS TO BE DETERMINED IN FIELD BY REVEGETATION SPECIALIST.
  - SALVAGED WETLAND PLUGS TO BE PLANTED AS DIRECTED BY REVEGETATION SPECIALIST.
  - SEEDS AND CONTAINER PLANTS TO BE SUPPLIED BY NTCD. ALL PLANTS SHALL BE APPROVED/ACCEPTED BY CONTRACTOR.
  - SEE CIVIL ENGINEERING PLANS AND DETAILS FOR CHANNEL STABILIZATION AND GRADING DETAILS.
  - NO TREES OR SHRUBS TO BE PLACED WITHIN LIMITS OF BERM OR AS DIRECTED BY ENGINEER.
  - A 5 FOOT BUFFER ZONE WILL BE MAINTAINED AT THE TOE OF THE BERM ON THE CHANNEL/FLOODPLAIN SIDE. NO PLANTING OF WOOD OR DEEP ROOTED PLANTS OR BURIED STRUCTURES SHALL BE ALLOWED IN THIS ZONE.
  - ALL DISTURBED AREAS TO BE REVEGETATED. ADDITIONAL REVEGETATION IN NORTHERN DRAINAGE AND UPSTREAM IMPROVEMENTS WILL BE AS DIRECTED BY ENGINEER AND PER SPECIFICATION.
  - IRRIGATION CONNECTION SHALL BE ESTABLISHED FROM IRRIGATION LINES WITHIN DOUGLAS COUNTY PARKING LOT STAGING AREA PARCEL APN 1318-23-401-047 OR OTHERWISE AS APPROVED BY KOD.



INTERPRETIVE SIGN ENCLOSURE (2)  
NTS



REVEGETATION SIGN (1)  
SCALE 1"=1'

LANDSCAPE DETAIL  
SCALE 1"=5'

GRADING LIMIT (TYP)

SEE SHEET C-2 FOR ROCK SLOPE PROTECTION, AND STREAM GRADING DETAIL



EXISTING ALIGNMENT

PROPOSED ALIGNMENT  
SEE ENGINEERING  
DETAILS FOR CHANNEL  
BANK STABILIZATION

EXISTING CHANNEL TO  
BE REGRADED/FILLED  
SEE CIVIL SHEETS

GRADING LIMIT

5' BUFFER. SEE NOTES.

PROPOSED ROCK PROTECTION  
SEE CIVIL SHEETS

SEE LANDSCAPE  
DETAIL

INSTALL  
REVEGETATION  
SIGN

SALVAGE RIVER  
ROCK MULCH AND  
REINSTALL  
±200 SF

PROPOSED SIDEWALK.  
SEE CIVIL SHEETS.

PROPOSED POST &  
RAIL FENCE  
±45 LF

2  
PLACE INTERPRETIVE  
SIGN ENCLOSURE PER  
DIRECTION OF  
ENGINEER

LANDSCAPE DETAIL  
SCALE 1"=5'

REVEGETATION PLAN  
SCALE 1"=20'

REVEGETATION LEGEND

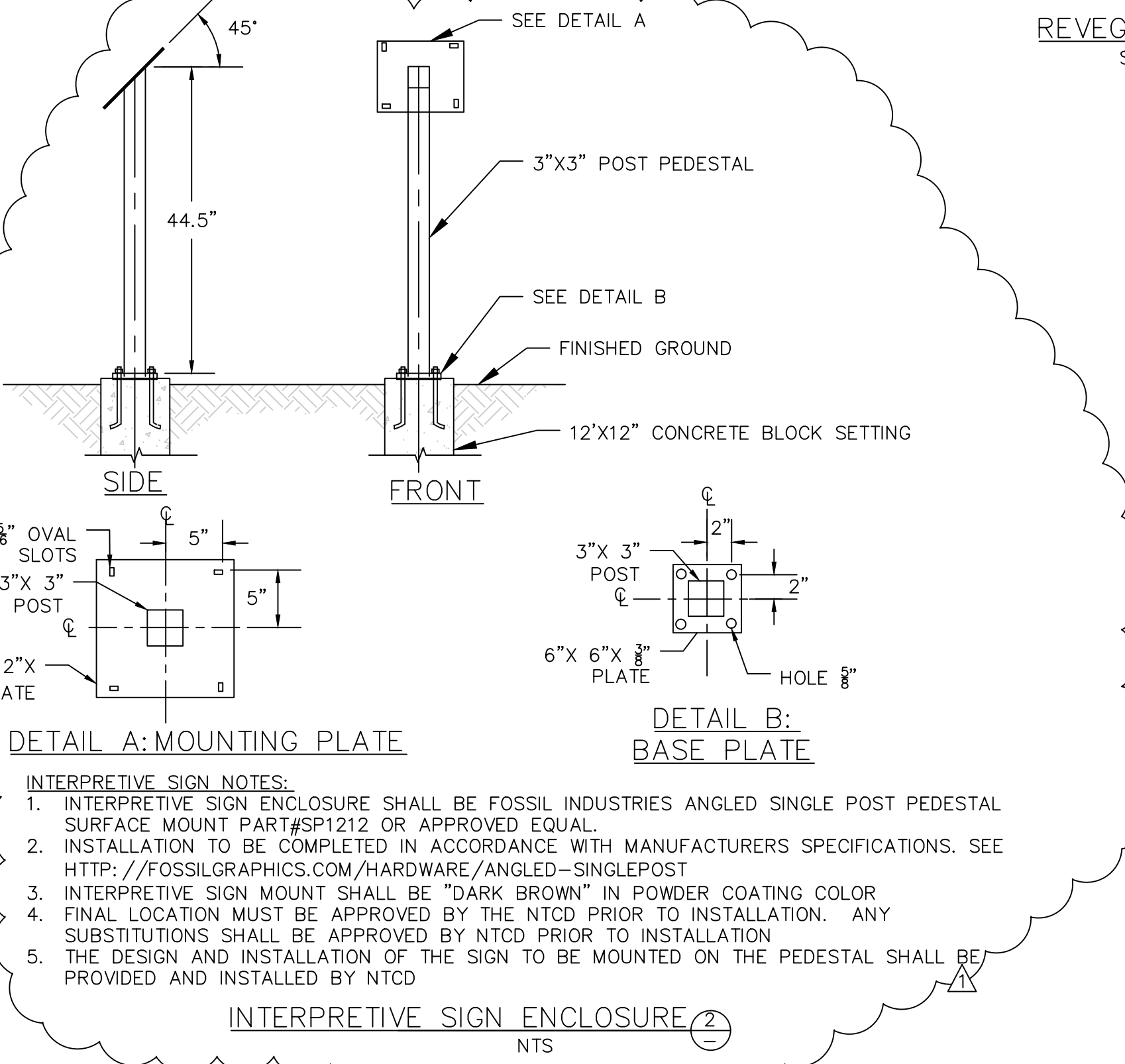
**PLANT LEGEND**

SYMBOL	BOTANICAL NAME	COMMON NAME	QTY.	SIZE
AS	<i>Populus tremuloides</i>	Aspen	12	5-gal
SB	<i>Amelanchier alnifolia</i>	Serviceberry	8	T-pot
SW	<i>Salix scouleriana</i>	Scouler's Willow	4	D-pot
SH	<i>Salix lucida ssp. lasiandra</i>	Shining Willow	4	D-pot
LW	<i>Salix lemmonii</i>	Lemmon's Willow	4	D-pot
DW	<i>Cornus sericea</i>	Red-Osier Dogwood	8	D-pot
EB	<i>Sambucus nigra (mexicana)</i>	Blue Elderberry	5	1-gal
MS	<i>Spirea densiflora</i>	Mountain Spirea	10	1-gal
SC	<i>Ribes nevadense</i>	Sierra Currant	10	1-gal
TW	<i>Lonicera involucrata</i>	Twinberry	6	1-gal
WC	<i>Ribes cereum</i>	Wax Currant	5	1-gal
WR	<i>Rosa woodsii</i>	Woods' Rose	10	1-gal
WB	<i>Betula occidentalis</i>	Water Birch	6	Supercell
MA	<i>Sorbus californica</i>	Mountain Ash	6	Supercell
RS	<i>Perovskia atriplicifolia</i>	Russian Sage	8	1-gal
PF	<i>Potentilla fruticosa</i>	Shrubby Cinquefoil	7	1-gal
BB	<i>Arctostaphylos uva-ursi</i>	Bearberry	11	1-gal

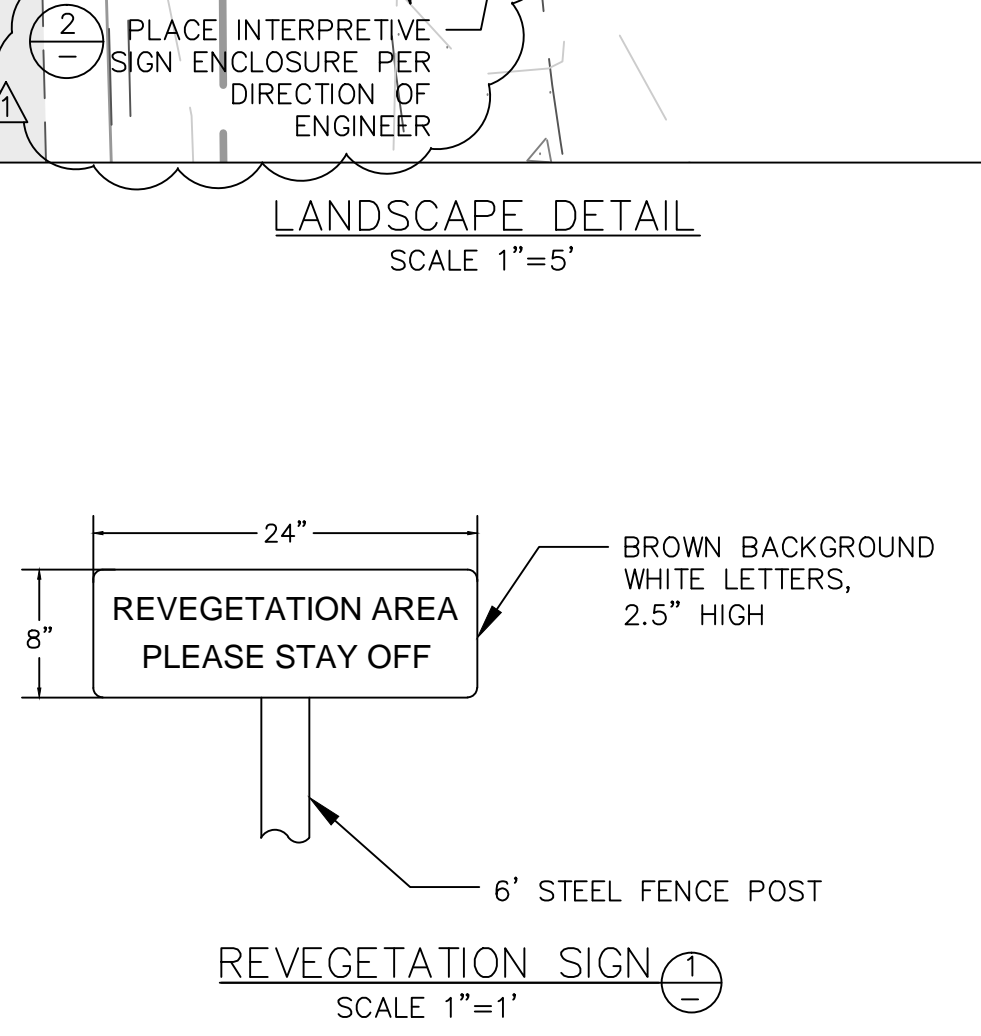
  

BOTANICAL NAME	COMMON NAME	QTY.	SIZE
<i>Gaillardia pulchella</i>	Indian Blanketflower	20	Supercell
<i>Arnica nevadensis</i>	Sierra Arnica	20	Supercell
<i>Delphinium glaucum</i>	Towering Larkspur	20	Supercell
<i>Potentilla gracilis</i>	Slender Cinquefoil	20	Supercell
<i>Mimulus guttatus</i>	Common Monkeyflower	20	Supercell
<i>Castilleja miniata ssp. Miniata</i>	Giant Red Paintbrush	20	Supercell
<i>Castilleja parviflora</i>	Small-Flowered Paintbrush	20	Supercell
<i>Arnica longifolia</i>	Seep-Spring Arnica	20	Supercell
<i>Arnica mollis</i>	Soft Arnica	20	Supercell
<i>Rubus parviflorus</i>	Thimbleberry	30	4"
<i>Aquilegia formosa</i>	Columbine	20	4"
<i>Lupinus polyphyllus</i>	Big Leaved Lupine	20	4"
<i>Lilium parvum</i>	Alpine Lily	10	4"
<i>Potentilla glandulosa</i>	Sticky Cinquefoil	20	4"
<i>Mimulus lewisii</i>	Lewis' Monkeyflower	20	4"
<i>Helenium bigelovii</i>	Bigelow Sneezeweed	20	4"
<i>Penstemon rydbergii var. oreocharis</i>	Meadow Penstemon	20	4"

- NOTES:**
- FINAL PLANT AND PERENNIAL LOCATIONS TO BE DETERMINED IN FIELD BY REVEGETATION SPECIALIST.
  - SALVAGED WETLAND PLUGS TO BE PLANTED AS DIRECTED BY REVEGETATION SPECIALIST.
  - SEEDS AND CONTAINER PLANTS TO BE SUPPLIED BY NTCD. ALL PLANTS SHALL BE APPROVED/ACCEPTED BY CONTRACTOR.
  - SEE CIVIL ENGINEERING PLANS AND DETAILS FOR CHANNEL STABILIZATION AND GRADING DETAILS.
  - NO TREES OR SHRUBS TO BE PLACED WITHIN LIMITS OF BERM OR AS DIRECTED BY ENGINEER.
  - A 5 FOOT BUFFER ZONE WILL BE MAINTAINED AT THE TOE OF THE BERM ON THE CHANNEL/FLOODPLAIN SIDE. NO PLANTING OF WOOD OR DEEP ROOTED PLANTS OR BURIED STRUCTURES SHALL BE ALLOWED IN THIS ZONE.
  - ALL DISTURBED AREAS TO BE REVEGETATED. ADDITIONAL REVEGETATION IN NORTHERN DRAINAGE AND UPSTREAM IMPROVEMENTS WILL BE AS DIRECTED BY ENGINEER AND PER SPECIFICATION.
  - IRRIGATION CONNECTION SHALL BE ESTABLISHED FROM IRRIGATION LINES WITHIN DOUGLAS COUNTY PARKING LOT STAGING AREA PARCEL APN 1318-23-401-047 OR OTHERWISE AS APPROVED BY KOD.



INTERPRETIVE SIGN ENCLOSURE (2)  
NTS



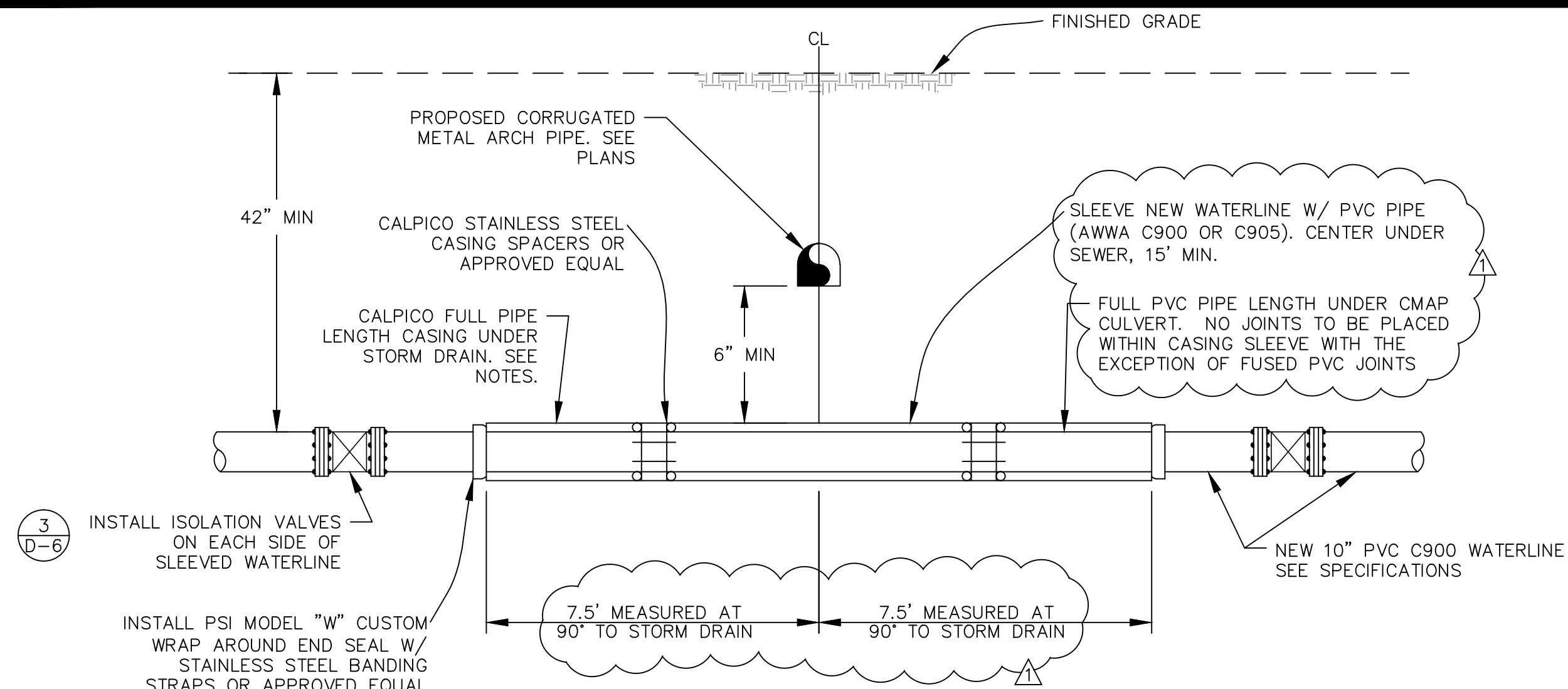
REVEGETATION SIGN (1)  
SCALE 1"=1'

LANDSCAPE DETAIL  
SCALE 1"=5'

REVEGETATION PLAN  
SCALE 1"=20'

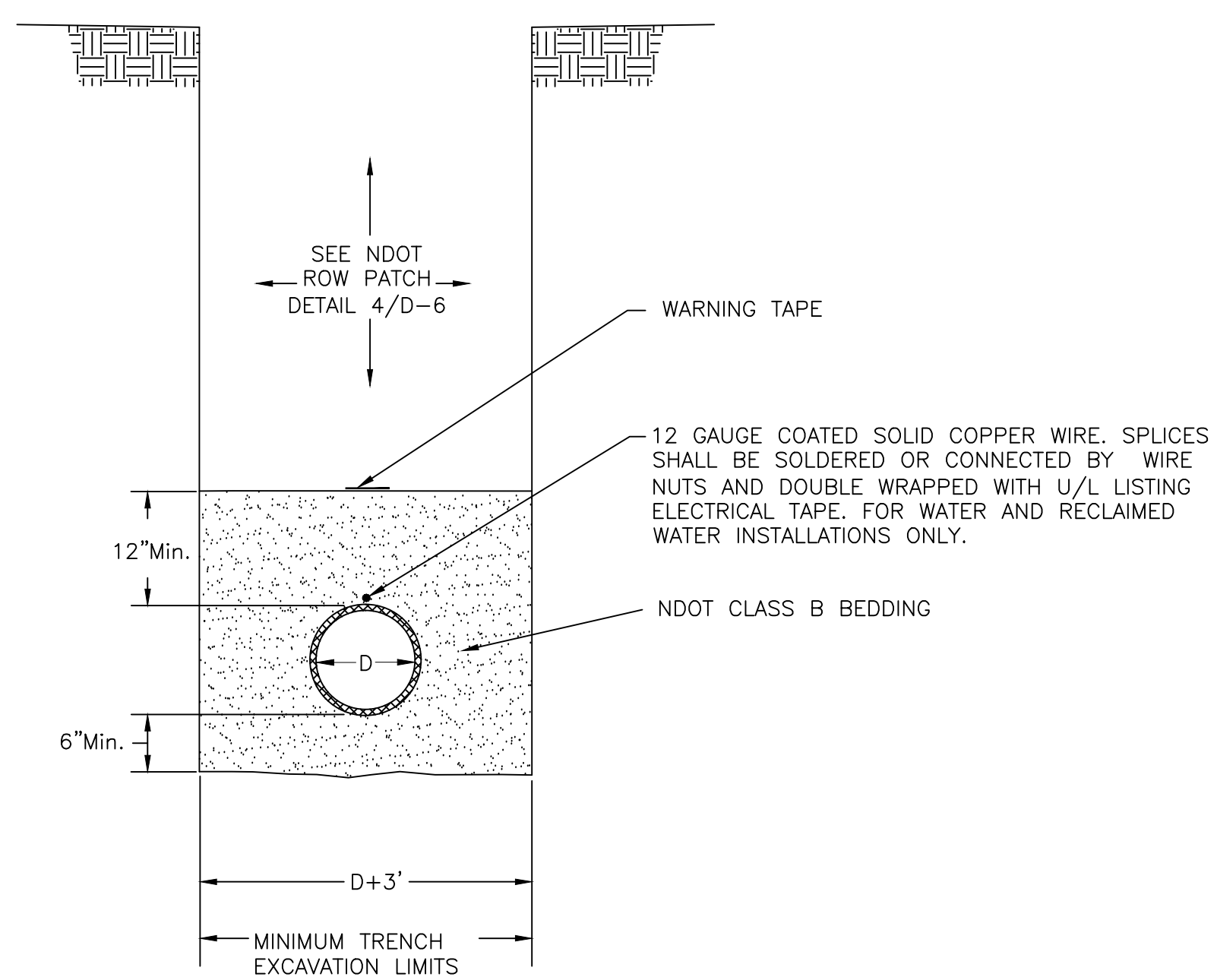
REVEGETATION LEGEND





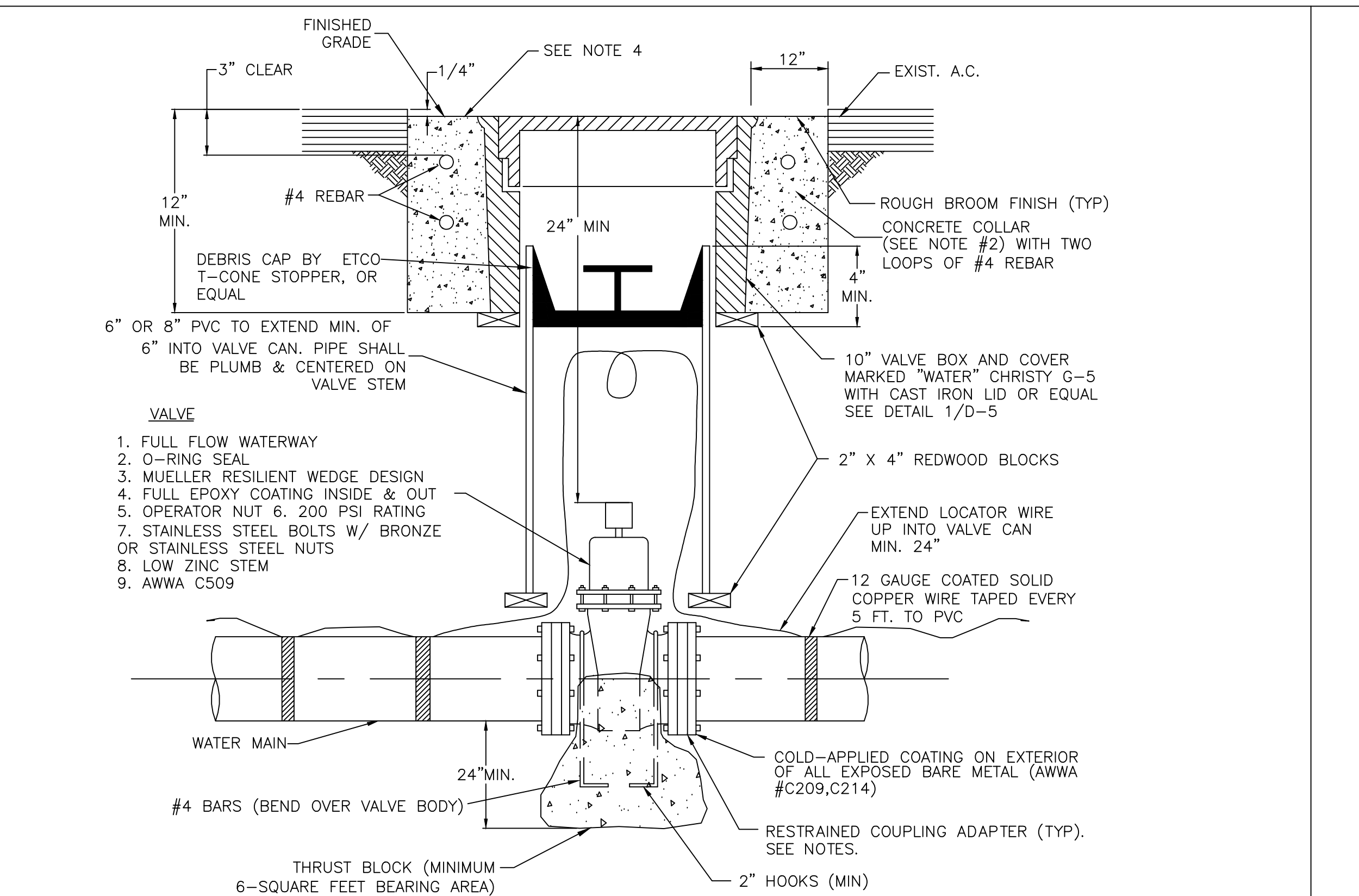
- CROSSING NOTES:**
- FOR PURPOSES OF SEPARATION AND PROTECTION OF THE WATER SUPPLY, RECLAIMED WATER AND STORM DRAIN LINE SHALL BE CONSIDERED A SEWER LINE.
  - CUT ADJACENT PIPE SECTIONS AS REQUIRED TO CENTER FULL 20' WATERLINE PIPE LENGTH UNDER SEWER.
  - SLEEVE/CASING PIPE SHALL BE SIZED TO FIT 10" WATER MAIN, SPACERS, AND ALL OTHER APPURTENANCES. CASING PIPE SHALL BE NO LARGER THAN 1.5 TIMES THE O.D. OF THE WATER MAIN. CONTRACTOR SHALL BE RESPONSIBLE FOR SELECTING THE CORRECT DIAMETER OF CASING.
  - CONCRETE FOR THRUST BLOCKS SHALL NOT INTERFERE WITH THE REMOVAL OF BOLTED ASSEMBLIES.
  - ROUTING WATER LINE UNDER SEWER LINE REQUIRES APPROVAL BY THE WATER UTILITY.
  - CROSSING MUST COMPLY WITH NAC 445A.
  - CMAP SHALL BE INSTALLED WITH NO JOINTS OVER WATERLINE.

**WATER MAIN CROSSING** 1  
SCALE: N.T.S. D-6



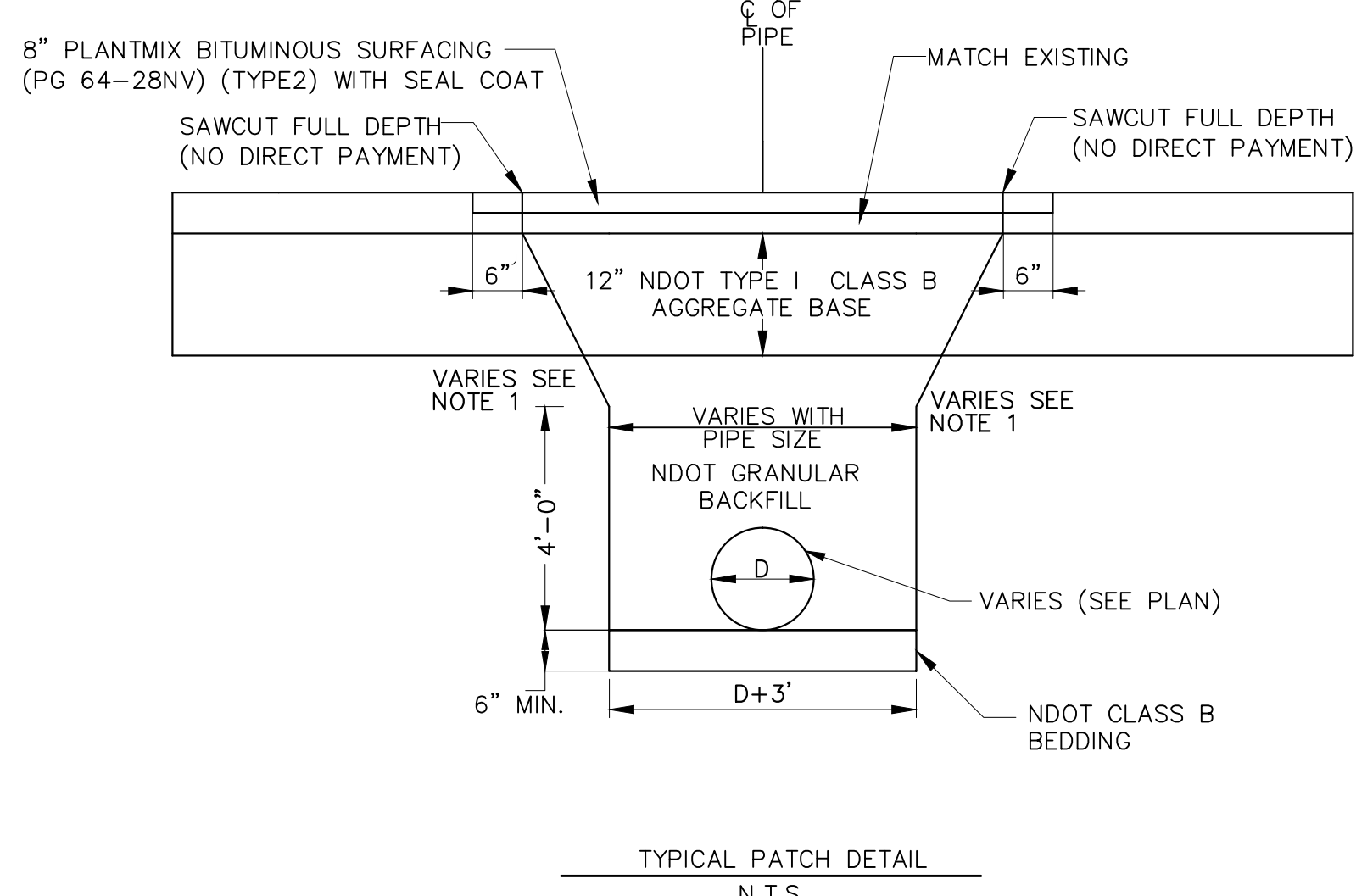
- WATER LINE TRENCH NOTES:**
- TRENCHES MORE THAN 4' DEEP SHALL BE SHORED, LAID BACK TO AT LEAST THE ANGLE OF REPOSE FOR EXISTING FIELD CONDITIONS, OR SOME OTHER MEANS OF PROTECTION SHALL BE PROVIDED.
  - IF HAZARDOUS FIELD CONDITIONS INDICATE GROUND MOVEMENT MAY BE EXPECTED, TRENCHES LESS THAN 4' DEEP SHALL BE PROTECTED AS INDICATED IN NOTE 1.
  - A TRAVEL LANE SHALL BE MAINTAINED. TRENCH EXCAVATION INCLUDING SHIELD AND SHORING SYSTEMS SHALL COMPLY WITH CURRENT OSHA SAFETY REGULATIONS, FEDERAL REGISTER 29 CFR, PART 1926, SUBPART P.
  - ALL MATING SURFACES SHALL BE TACK COATED PRIOR TO PAVING (NO DIRECT PAYMENT).
  - SLURRY BACKFILL TRENCH TO BE USED WHEN UNABLE TO MAINTAIN A 12' TRAVEL LANE WITH THE STANDARD TRENCH OR AS DIRECTED BY THE ENGINEER.
  - COMPACTION SHALL BE PERCENT RELATIVE COMPACTION BASED ON THE MAXIMUM DRY DENSITY DETERMINED WITH TEST METHOD NO. NEV. T101.
  - IN HIGH GROUND WATER, GRANULAR BACKFILL WRAPPED IN AN APPROVED GEOTEXTILE MAY BE USED WITH THE APPROVAL OF THE ENGINEER.
  - THERE SHALL BE NO ADDITIONAL COMPENSATION FOR ANY ADDITIONAL EXCAVATION OR BACKFILL REQUIRED FOR EXCAVATIONS TO MEET OSHA REGULATIONS.
  - PLACE WARNING TAPE 1 FT. ABOVE WATER, AND RECLAIMED WATER PIPE.
  - WATER STOPS SHALL BE USED IN HIGH GROUND- WATER CONDITIONS PER DETAIL 2/D-5.

**WATER LINE TRENCH EXCAVATION AND BACKFILL** 2  
SCALE: N.T.S. D-6



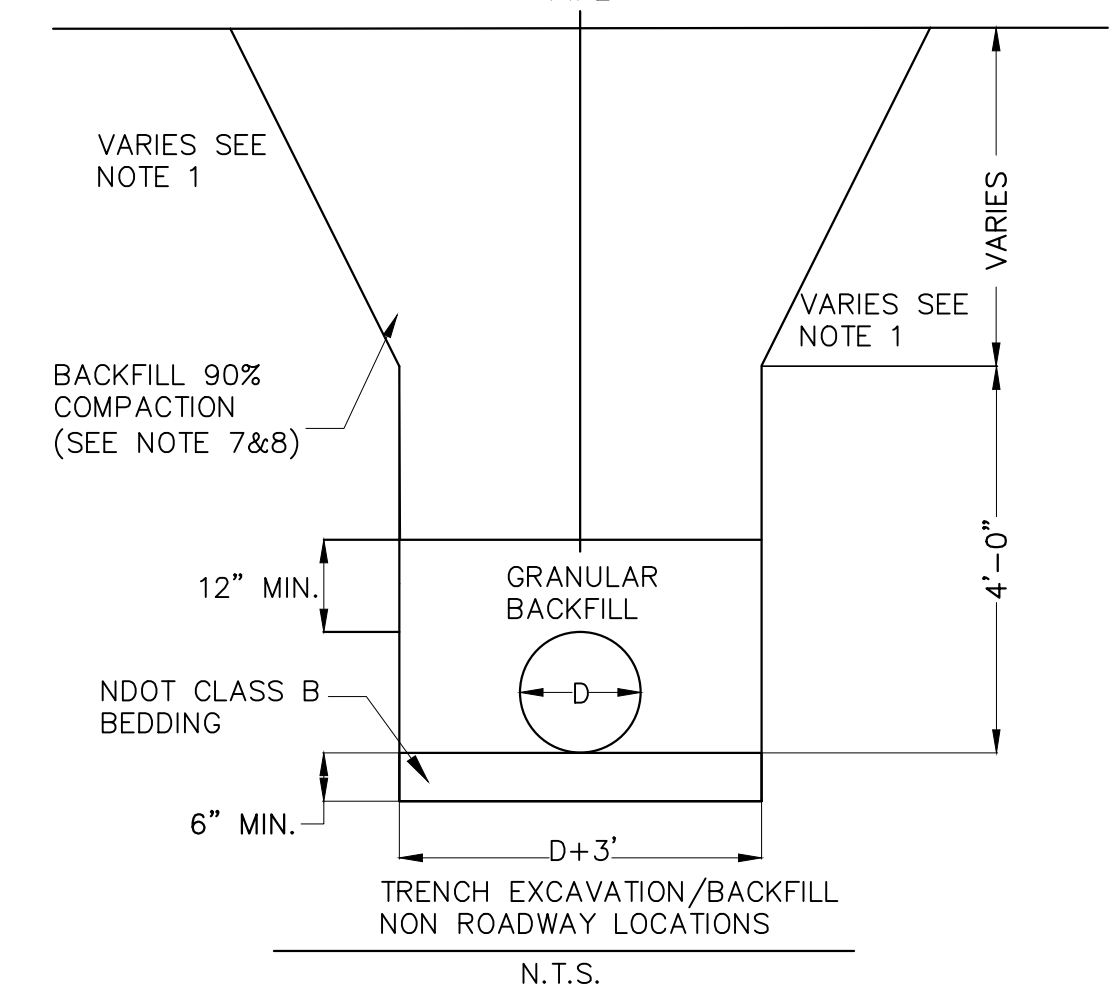
- VALVE NOTES:**
- MATERIAL USED FOR THRUST BLOCKING SHALL NOT PREVENT ACCESS TO THE BOLT ASSEMBLY.
  - CONCRETE SHALL MEET THE REQUIREMENTS OF SECTION 202.12 OF THE STANDARD SPECIFICATIONS.
  - IN ALL AREAS, LIDS SHALL BE SET FLUSH WITH FINISHED GRADE UNLESS OTHERWISE NOTED.
  - THE CONCRETE COLLAR SHALL BE 1/4" BELOW SURROUNDING PAVEMENT. APPLY BLACK COLORANT TO SURFACE OF CONCRETE.
  - SPLICES IN WIRE SHALL BE CONNECTED BY SOLDER OR WIRE NUTS AND WRAPPED WITH UL LISTED ELECTRICAL TAPE.
  - PROVIDE AND INSTALL EXTENSION STEMS SO THAT VALVE OPERATING NUT IS NOT GREATER THAN FIVE (5) FEET BELOW FINISHED GRADE.
  - THRUST BLOCK MAY BE ELIMINATED FOR FLANGED VALVES WITH MUELLER AQUAGRIP OR APPROVED EQUAL FLANGED RESTRAINT ADAPTOR.
  - PROVIDE PIPE POLYETHYLENE PROTECTIVE WRAP ON ALL VALVES, 8-MILS MINIMUM, SECURED WITH 2-INCH WIDE PRESSURE SENSITIVE PLASTIC TAPE, 10-MILS MINIMUM.
  - COUPLING ADAPTOR TYPE SHALL BE RESTRAINED AND SELECTED PER PROPOSED OR EXISTING WATER MAIN MATERIAL TYPE. WHERE VALVE IS CONNECTED TO AC PIPE, COUPLING ADAPTOR SHALL BE ENCASED IN CONCRETE TO PROVIDE RESTRAINT. CONCRETE ENCASEMENT SHALL EXTEND 1' MINIMUM FROM COUPLING CONNECTION. ENCASEMENT SHALL NOT INTERFERE WITH OPERATION OF THE VALVE.

**ISOLATION VALVE** 3  
SCALE: N.T.S. D-6



- TRENCH/PATCHING NOTES:**
- TRENCHES MORE THAN 4' DEEP SHALL BE SHORED, LAID BACK TO AT LEAST THE ANGLE OF REPOSE FOR EXISTING FIELD CONDITIONS, OR SOME OTHER MEANS OF PROTECTION SHALL BE PROVIDED.
  - IF HAZARDOUS FIELD CONDITIONS INDICATE GROUND MOVEMENT MAY BE EXPECTED, TRENCHES LESS THAN 4' DEEP SHALL BE PROTECTED AS INDICATED IN NOTE 1.
  - PAVING JOINTS IN ROADWAY ARE NOT ALLOWED IN WHEEL PATHS.
  - MATCH EXISTING STRIPING THROUGH LIMITS OF PATCH AREA.
  - A TRAVEL LANE SHALL BE MAINTAINED. TRENCH EXCAVATION INCLUDING SHIELD AND SHORING SYSTEMS SHALL COMPLY WITH CURRENT OSHA SAFETY REGULATIONS, FEDERAL REGISTER 29 CFR, PART 1926, SUBPART P.
  - ALL MATING SURFACES SHALL BE TACK COATED PRIOR TO PAVING (NO DIRECT PAYMENT).
  - SLURRY BACKFILL TRENCH TO BE USED WHEN UNABLE TO MAINTAIN A 12' TRAVEL LANE WITH THE STANDARD TRENCH OR AS DIRECTED BY THE ENGINEER.
  - COMPACTION SHALL BE PERCENT RELATIVE COMPACTION BASED ON THE MAXIMUM DRY DENSITY DETERMINED WITH TEST METHOD NO. NEV. T101.
  - IN HIGH GROUND WATER, GRANULAR BACKFILL WRAPPED IN AN APPROVED GEOTEXTILE MAY BE USED WITH THE APPROVAL OF THE ENGINEER.
  - THERE SHALL BE NO ADDITIONAL COMPENSATION FOR ANY ADDITIONAL EXCAVATION OR BACKFILL REQUIRED FOR EXCAVATIONS TO MEET OSHA REGULATIONS.

**NDOT ROW TRENCH/PATCHING** 4  
SCALE: N.T.S. D-6



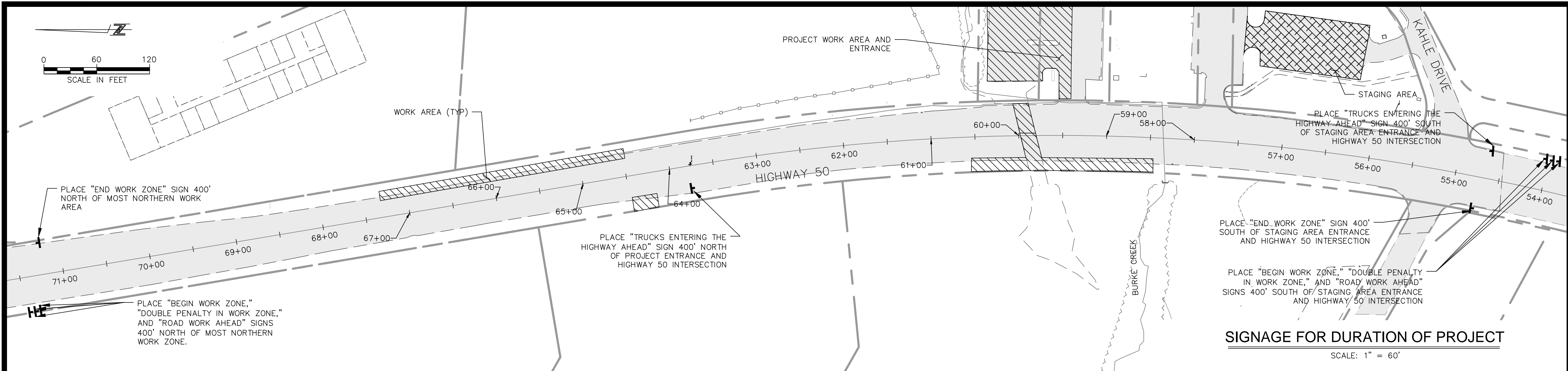
DETAILS  
BURKE CREEK HWY 50 CROSSING AND  
REALIGNMENT PROJECT  
PHASE 1

REVISIONS		
NO	DATE	DESCRIPTION
1	6/23/16	ADDENDUM 1

DESIGNED/DRAWN	MK/JB
CHECKED	MG
DATE	06/23/2016
SCALE	AS SHOWN
PROJECT	BCC

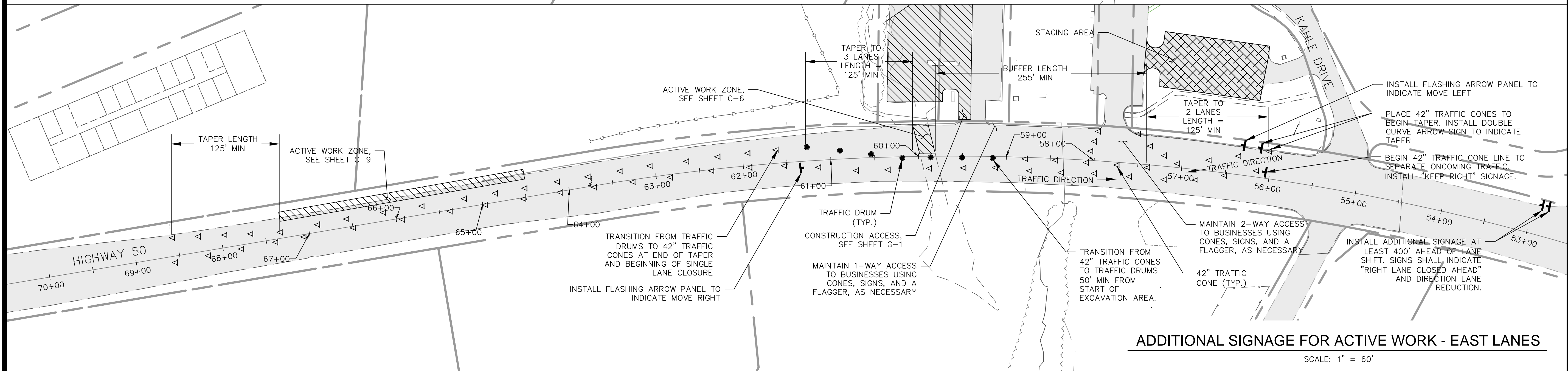
SHEET  
**D-6**  
23 of 25





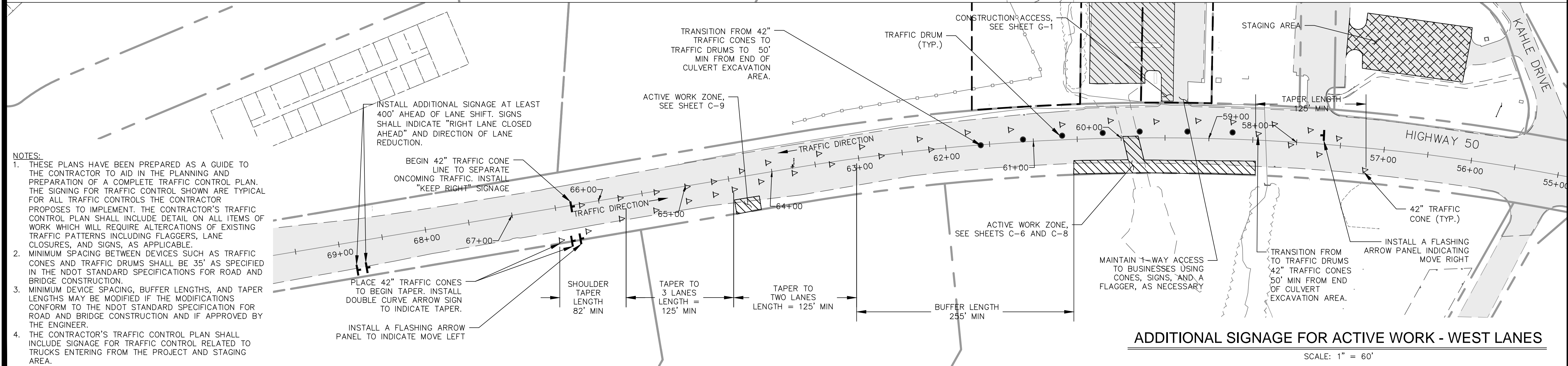
**SIGNAGE FOR DURATION OF PROJECT**

SCALE: 1" = 60'



**ADDITIONAL SIGNAGE FOR ACTIVE WORK - EAST LANES**

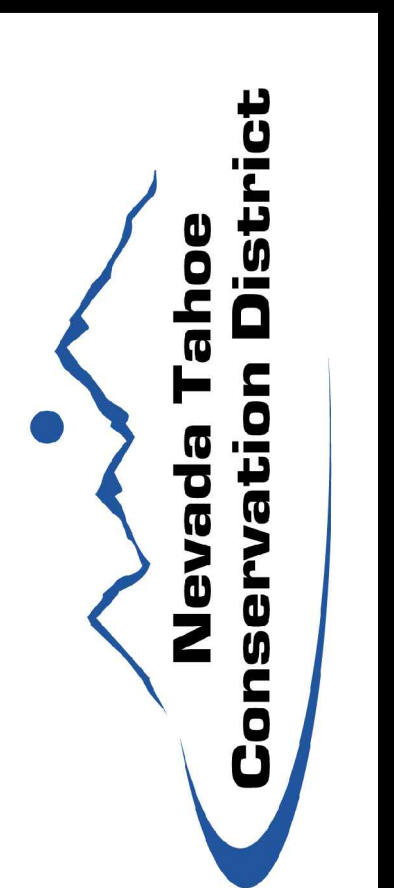
SCALE: 1" = 60'



**ADDITIONAL SIGNAGE FOR ACTIVE WORK - WEST LANES**

SCALE: 1" = 60'

- NOTES:**
1. THESE PLANS HAVE BEEN PREPARED AS A GUIDE TO THE CONTRACTOR TO AID IN THE PLANNING AND PREPARATION OF A COMPLETE TRAFFIC CONTROL PLAN. THE SIGNING FOR TRAFFIC CONTROL SHOWN ARE TYPICAL FOR ALL TRAFFIC CONTROLS THE CONTRACTOR PROPOSES TO IMPLEMENT. THE CONTRACTOR'S TRAFFIC CONTROL PLAN SHALL INCLUDE DETAIL ON ALL ITEMS OF WORK WHICH WILL REQUIRE ALTERATIONS OF EXISTING TRAFFIC PATTERNS INCLUDING FLAGGERS, LANE CLOSURES, AND SIGNS, AS APPLICABLE.
  2. MINIMUM SPACING BETWEEN DEVICES SUCH AS TRAFFIC CONES AND TRAFFIC DRUMS SHALL BE 35' AS SPECIFIED IN THE NDOT STANDARD SPECIFICATIONS FOR ROAD AND BRIDGE CONSTRUCTION.
  3. MINIMUM DEVICE SPACING, BUFFER LENGTHS, AND TAPER LENGTHS MAY BE MODIFIED IF THE MODIFICATIONS CONFORM TO THE NDOT STANDARD SPECIFICATION FOR ROAD AND BRIDGE CONSTRUCTION AND IF APPROVED BY THE ENGINEER.
  4. THE CONTRACTOR'S TRAFFIC CONTROL PLAN SHALL INCLUDE SIGNAGE FOR TRAFFIC CONTROL RELATED TO TRUCKS ENTERING FROM THE PROJECT AND STAGING AREA.



**TRAFFIC CONTROL PLAN**  
**BURKE CREEK HWY 50 CROSSING AND**  
**REALIGNMENT PROJECT**  
**PHASE 1**

DESIGNED/DRAWN	MK/MK
CHECKED	MG
DATE	06/22/2016
SCALE	AS SHOWN
PROJECT	BCC
SHEET	<b>TC-1</b>
	1 OF 1